

80 Stoneham Road

Hove, BN3 5HE

Guide price £1,000,000

A truly exceptional three-bedroom, three-and-a-half bathroom townhouse forming part of the historic Old Maynards Sweet Factory building, originally constructed in 1902. Behind the handsome red-brick façade lies a striking, architecturally designed home that captures the essence of New York loft-style living, blending industrial heritage with cutting-edge modern design.



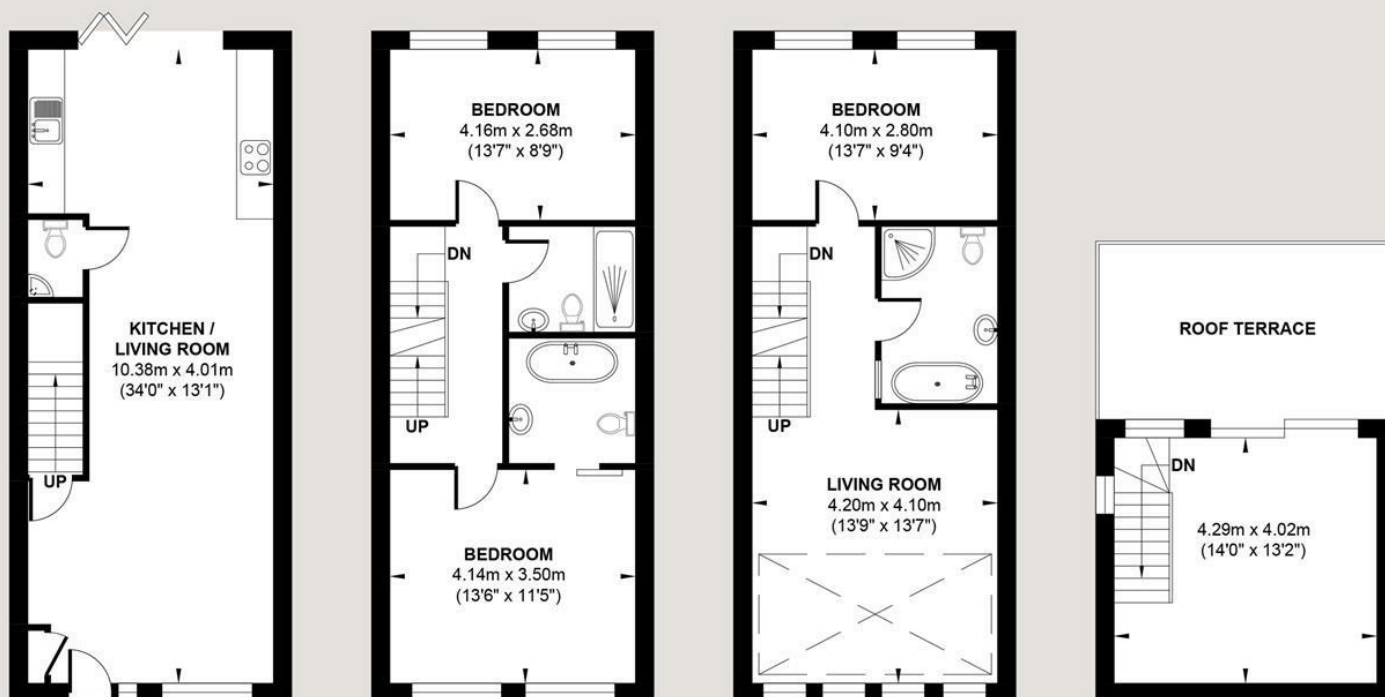
- Iconic converted Victorian building (1902)
- Three double bedrooms and three bathrooms
- 34ft open-plan kitchen/living/dining area
- Top-floor studio/living space with roof terrace access
- Private walled courtyard garden
- Over 1,520 sq ft of living accommodation
- Principal bedroom with en-suite
- Vaulted-ceiling lounge with exposed brick walls
- Private roof terrace with stunning sea views
- Stylish interior with contemporary and industrial design

Energy Efficiency Rating		Current	Potential
Very energy efficient - lower running costs			
(92 plus)	A		85
(81-91)	B		
(69-80)	C		
(55-68)	D		
(39-54)	E		
(21-38)	F	63	
(1-20)	G		
Not energy efficient - higher running costs			
England & Wales		EU Directive 2002/91/EC	



STONEHAM ROAD

Approx. Gross Internal Floor (Including Garage) Area = 142.11 sq m / 1529.67 sq ft
 Illustration for identification purposes only, measurements are approximate, not to scale.



GROUND FLOOR
 Approximate Floor Area
 448.0 sq ft
 (41.62 sq m)

FIRST FLOOR
 Approximate Floor Area
 448.0 sq ft
 (41.62 sq m)

SECOND FLOOR
 Approximate Floor Area
 448.0 sq ft
 (41.62 sq m)

THIRD FLOOR
 Approximate Floor Area
 185.67 sq ft
 (17.25 sq m)



Foster & Co and their clients give notice that:
 These sales particulars do not constitute any part of an offer of contract and are for guidance for prospective purchases only and should be not relied upon as a statement of fact.
 We are not to be held responsible for material information that has not been given to us by our client at the time of marketing.
 All measurements are approximate

